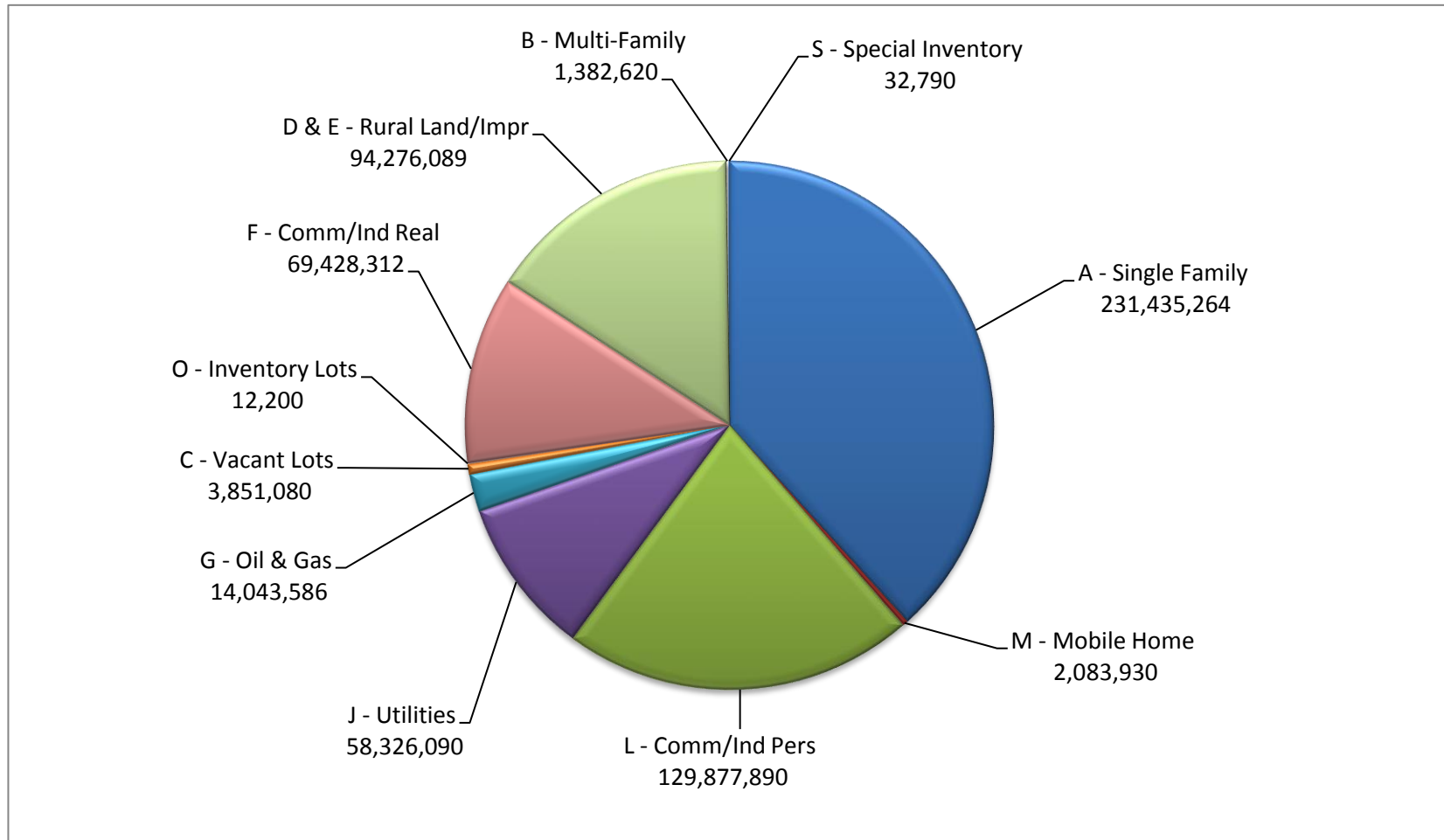


GREGG COUNTY EMERGENCY SERVICES DISTRICT #1

2018 APPRAISED VALUES

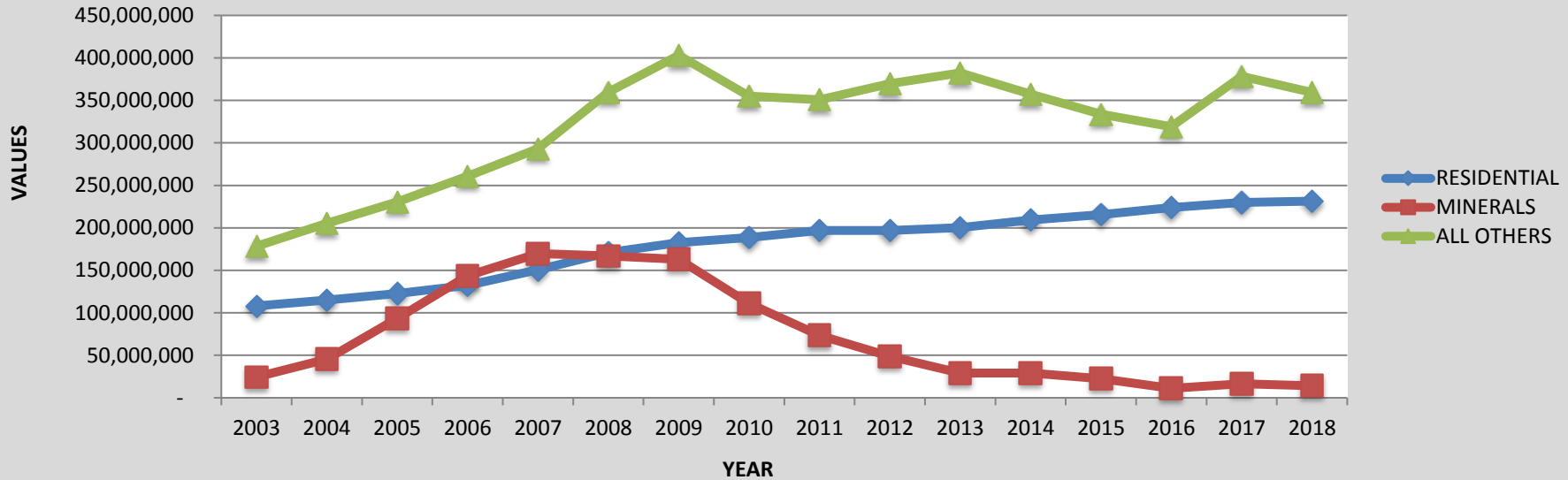
TOTAL GREGG COUNTY EMERGENCY SERVICES DISTRICT #1 = \$ 604,749,851



A - Single Family	231,435,264
M - Mobile Home	2,083,930
L - Comm/Ind Pers	129,877,890
J - Utilities	58,326,090
G - Oil & Gas	14,043,586
C - Vacant Lots	3,851,080
O - Inventory Lots	12,200
F - Comm/Ind Real	69,428,312
D & E - Rural Land/Impr	94,276,089
B - Multi-Family	1,382,620
S - Special Inventory	32,790
	604,749,851

GREGG COUNTY EMERGENCY SERVICES DISTRICT #1

COMPARISON OF RESIDENTIAL, MINERALS AND ALL OTHER PROPERTY



	RESIDENTIAL	MINERALS	ALL OTHERS
2003	108,111,525	24,432,280	178,404,161
2004	114,944,240	45,355,750	205,150,535
2005	122,806,820	93,288,300	230,675,755
2006	132,298,920	143,611,370	260,801,650
2007	150,588,880	169,737,060	293,076,313
2008	171,090,130	167,079,060	359,612,954
2009	182,474,336	162,857,390	403,064,458
2010	188,645,647	110,936,570	355,113,568
2011	196,763,758	73,250,130	350,588,722
2012	196,924,372	48,625,430	369,667,984
2013	200,093,547	29,227,130	382,240,922
2014	209,065,828	29,062,380	357,331,999
2015	215,712,060	22,592,090	333,650,673
2016	223,943,671	11,121,500	319,113,414
2017	229,923,943	16,569,293	378,212,473
2018	231,435,264	14,043,586	359,271,001

GREGG COUNTY EMERGENCY SERVICES DISTRICT #1

CLASSIFICATION OF VALUATION

PERSONAL USE CATEGORY	2013	2014	2015	2016	2017	2018
Real, Residential, Single Family	200,093,547	209,065,828	215,712,060	223,943,671	229,923,943	231,435,264
Real, Residential, Multi-Family	787,140	783,410	922,350	965,760	1,059,440	1,382,620
Real, Vacant Lots/Tracts	4,221,732	4,081,417	3,975,420	3,944,710	3,837,900	3,851,080
Real, Acreage (Land Only)	32,762,998	32,947,371	32,363,787	30,595,879	29,323,469	28,099,932
Real, Farm and Ranch Improvements	46,870,572	49,773,041	53,392,146	57,484,345	63,024,954	66,176,157
Real, Commercial	33,190,050	34,285,610	34,527,980	35,171,890	40,419,552	36,612,182
Real, Industrial	24,997,100	31,303,570	32,596,770	32,961,090	36,009,540	32,816,130
Real, Minerals, Oil and Gas	29,227,130	29,062,380	22,592,090	11,121,500	16,569,293	14,043,586
Real and Tangible, Personal Utilities	14,812,120	15,664,880	15,467,600	14,378,450	57,985,260	58,326,090
Tangible Personal, Commercial	101,609,620	92,844,280	77,739,750	65,874,190	73,010,028	68,816,420
Tangible Personal, Industrial	121,206,120	93,292,730	80,158,920	75,244,460	71,409,800	61,061,470
Tangible Personal, Mobile Homes	1,564,620	2,187,550	2,169,380	2,193,900	2,090,380	2,083,930
Real Property, Inventory	150,120	130,120	299,110	271,990	13,400	12,200
Tangible Personal, Special Inventory	68,730	38,020	37,460	26,750	28,750	32,790
TOTAL APPRAISED VALUE	611,561,599	595,460,207	571,954,823	554,178,585	624,705,709	604,749,851
Less Exemptions	2,538,040	2,919,116	2,869,852	3,069,966	3,252,340	4,019,094
Less Agricultural and Timber	30,541,919	30,625,553	29,963,409	28,124,179	26,261,550	24,997,585
Less Abatements	-	-	-	-	-	-
Less Pollution Control	478,390	871,380	469,860	464,060	66,400	58,900
Less HS Cap Loss	230,135	922,113	969,485	2,707,909	2,304,211	1,263,331
Total Reductions	33,788,484	35,338,162	34,272,606	34,366,114	31,884,501	30,338,910
NET ASSESSED VALUATION	577,773,115	560,122,045	537,682,217	519,812,471	592,821,208	574,410,941

GREGG COUNTY EMERGENCY SERVICES DISTRICT #1

2018

TOP TEN TAXPAYERS

TAXPAYER	MARKET VALUE	TAXABLE VALUE
AEP Southwestern Elec Power Co/ AEP/SWEPCO/Southwestern Elec Power Co	125,539,210	125,480,310
J W Power Co/ J-W Power Co	16,496,020	16,496,020
Cherokee Water Co	13,155,802	13,017,262
Enbridge Pipelines(East Texas) LP/ Enbridge Pipelines (E Tx) LP G & P Enbridge Inc-Longview Plant	10,097,210	10,097,210
National Coil Co	9,853,340	9,853,340
Basic Energy Services LP/Basic Energy- Acid/Cement/Offc/Maint/Snubbing	9,677,340	9,677,340
McClung Acquisition LLC/McClung Energy Services LLC	8,090,110	8,090,110
Nix Patterson & Roach LLP	6,047,580	6,047,580
Wilmington Trust Company	5,199,660	5,199,660
RSSD Properties	4,668,790	4,668,790